




Fulham High Street | London | SW6

£660 Per Week |

 2  2  1  C

ADN
RESIDENTIAL

Modern two bedroom first floor apartment situated on Fulham High Street.

This beautifully presented 762 sq ft apartment offers stylish open-plan living, contemporary finishes and excellent built-in storage throughout.

Located on the first floor, the property comprises a spacious principal bedroom with fitted wardrobes and a modern en suite bathroom featuring a bath with overhead shower. A second well-proportioned double bedroom also benefits from built-in storage and is served by a separate family bathroom with bath and overhead shower.

The bright open-plan kitchen and reception room creates an ideal entertaining space, complete with integrated appliances and ample room for dining and relaxing.

Additional benefits include underfloor heating in both bathrooms, wooden flooring, double glazing, air conditioning throughout and a useful utility cupboard.

The property further benefits from secure bike storage. Please note there is no parking permit available with this property.

Ideally positioned on Fulham High Street, the apartment is approximately 0.1 miles from Putney Bridge Underground Station (District Line), with excellent bus connections nearby via Fulham Road and New Kings Road, providing easy access into the City and West End.

Council Tax: Hammersmith and Fulham – Band E

Security Deposit: £3,300

Holding Deposit: £660

Deposits shown are based on an Assured Periodic Tenancy Agreement.

-
- Two Double Bedrooms
 - Two Bathrooms
 - Open Plan Kitchen / Reception Room
 - Double Glazed Windows
 - Air Conditioning
 - Prime Location
-

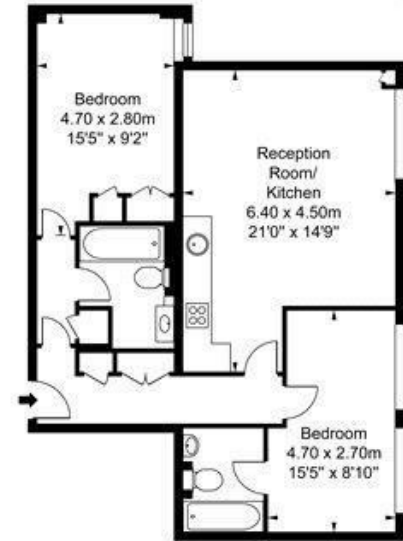
Council Tax Band: E

EPC: C

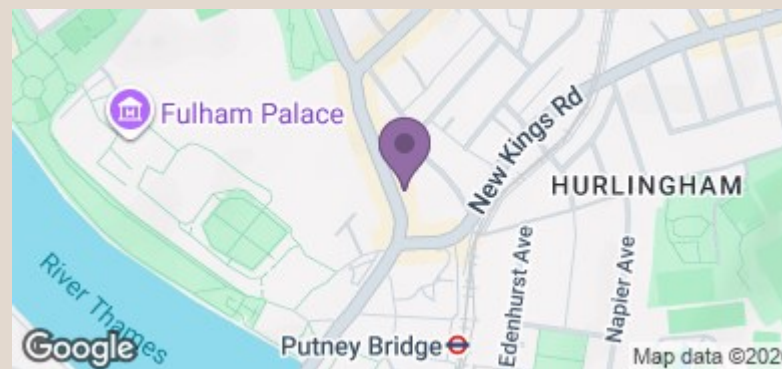




Fulham High Street, SW6
 Approximate Gross Internal Area
 70.76 sq m / 762 sq ft



First Floor



Energy Efficiency Rating		Current	Potential
Very energy efficient - lower running costs			
(92 plus)	A		
(81-91)	B		
(69-80)	C	77	77
(55-68)	D		
(39-54)	E		
(21-38)	F		
(1-20)	G		
Not energy efficient - higher running costs			
England & Wales		EU Directive 2002/91/EC	